



Government of **Western Australia**  
Department of **Communities**

# A Western Australia for Everyone: State Disability Strategy 2020- 2030 and Action Plan

**George Cherian, Strategic Policy Manager,  
Office of Disability**

**Accessible Tourism Forum | Tourism Council WA**

**Crown Perth, 21 June 2023**



# What we'll cover

- Context | Disability in WA | **A Western Australia for Everyone: State Disability Strategy 2020-2030**
- Commonwealth funding | **Disability Employment – Tourism Local Navigators Pilot**
- Examples of recently funded State Government initiatives
- Common reported **issues for tourists** with disability
- The **opportunities for accessible** tourism

# Disability in Western Australia

## Disability in Australia

Data source ABS 2018



### Education attainment



### Profound or severe disability



### Pension or allowance



### Living arrangements



### Labour force participation



## Disability in Western Australia



### Education attainment



### Profound or severe disability



### Pension or allowance



### Living arrangements



### Labour force participation



# Broader Policy Context

## The Broader Context



- The Strategy builds on Australia's ratification of the **United Nations Convention on the Rights of Persons with Disabilities (UNCRPD)** to promote equal opportunities and outcomes for people with disability.
- This is reflected in **Australia's Disability Strategy** that sets the national direction for change through government and community action and informs the implementation of WA's State Disability Strategy.

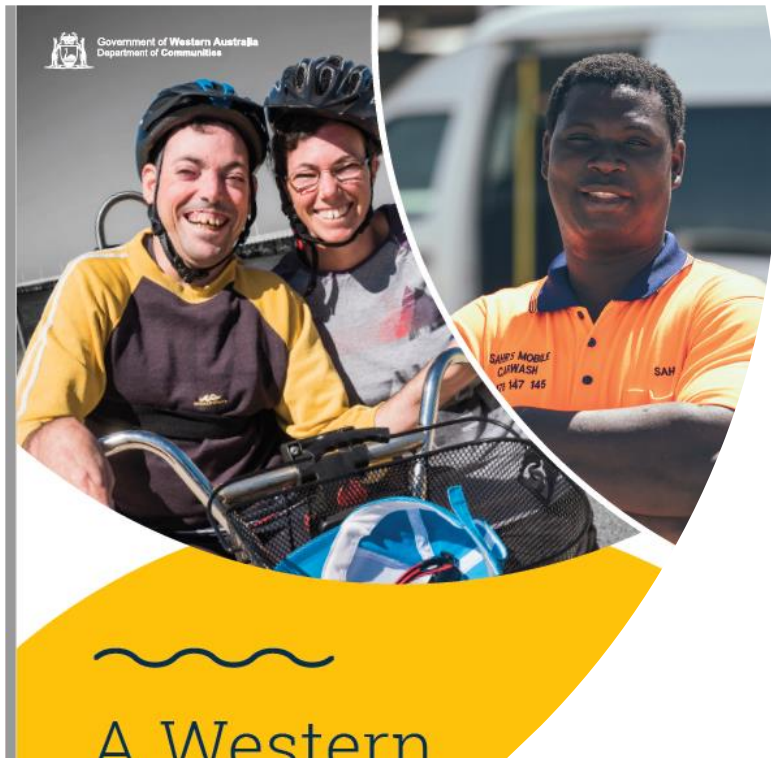
# A Western Australia for Everyone: State Disability Strategy 2020-2030

- **PWdWA** facilitated the co-design process for the State Disability Strategy.
- **Co-design** is a way of improving services with people with disability
- **Co-design** focuses on understanding and improving people's experiences of services as well as the services themselves.



Michael New, Mark Blowers, Suresh Rajan, Melissa Northcott, Angelo Cianciosi, Vanessa Vljakovic, Sarah Langmead, Ingrid Moore, Kerry Elder, Wendy Wright.

# The Strategic Vision



Department of Communities

## Strategy Overview

### Vision

People with disability, and those who share their lives, are engaged and feel empowered to live as they choose in a community where everyone belongs.

Pillars	Participate and contribute	Inclusive communities	Living well	Rights and equity
<b>What it means for the individual</b>	I participate, contribute and make choices about how I lead my life	I feel welcome, included and part of my community	I have access to housing and services that support me to live well	I am treated fairly and with dignity and respect, and my rights are upheld
<b>Strategic priorities</b>	<ul style="list-style-type: none"> <li>Inclusive education and training settings</li> <li>Jobs and economic participation</li> <li>Leadership</li> <li>People with high and complex needs</li> </ul>	<ul style="list-style-type: none"> <li>Access and inclusion planning</li> <li>Infrastructure</li> <li>Transport</li> <li>Sport and recreation</li> <li>Community attitudes</li> <li>Technology</li> </ul>	<ul style="list-style-type: none"> <li>Housing</li> <li>Disability services</li> <li>Health and mental health</li> <li>Workforce capacity and capability</li> </ul>	<ul style="list-style-type: none"> <li>Justice</li> <li>Advocacy</li> <li>Legislation and safety</li> <li>Information</li> </ul>
<b>Foundations</b>				
Governance and accountability			Monitoring and reporting	

# Second Action Plan for the Strategy



## Inclusive Communities

**What it is about – places and attitudes are welcoming**

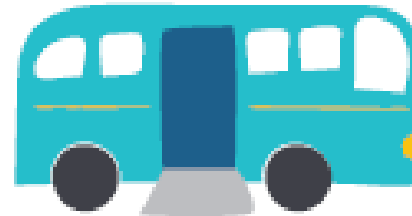
**What it means – “I feel welcome, included and part of my community”**

Strategic priorities	Outcomes
<ul style="list-style-type: none"><li>• Access and Inclusion Planning</li><li>• Infrastructure</li><li>• Transport</li><li>• Sport and recreation</li><li>• Community attitudes</li><li>• Technology</li></ul>	<ul style="list-style-type: none"><li>• Communities infrastructure is accessible to all</li><li>• People with disability can travel where they want to go with ease</li><li>• People with disability are welcomed and accepted by members of the community</li><li>• People with disability are included in a range of recreational, social, arts and cultural opportunities</li></ul>

Tourism WA

### 6.6 Accessible tourism

Work with Tourism Council Western Australia, which organises the annual WA Tourism Awards, to include an Accessible Tourism category in the Awards, to encourage greater participation by tourism operators in this field.



# Second Action Plan for the Strategy

## Inclusive Communities

What it is about – places and attitudes are welcoming

What it means – “I feel welcome, included and part of my community”

Strategic priorities	Outcomes
<ul style="list-style-type: none"> <li>Access and Inclusion Planning</li> <li>Infrastructure</li> <li>Transport</li> <li>Sport and recreation</li> <li>Community attitudes</li> <li>Technology</li> </ul>	<ul style="list-style-type: none"> <li>Communities infrastructure is accessible to all</li> <li>People with disability can travel where they want to go with ease</li> <li>People with disability are welcomed and accepted by members of the community</li> <li>People with disability are included in a range of recreational, social, arts and cultural opportunities</li> </ul>

Department of Communities

Department of Local Government, Sport and Cultural Industries

### 8.5 Trails engagement

Increase opportunities for people with disability to engage in trails activities through trail design, training of supporting personnel and consideration in the development of strategies and plans.

Department of Biodiversity, Conservation and Attractions

### 8.6 Access to natural and cultural experiences

Provide ongoing opportunities for people with disability to access and participate in natural and cultural experiences by designing new recreation sites and renovating existing places and attractions (where possible) so they are suitable for people with a range of accessibility requirements.

Department of Biodiversity, Conservation and Attractions

### 8.7 Every Kid in a Park

In partnership with Nature Play WA to deliver the Every Kid in a Park initiative. Nature Play WA will create fun and interactive nature play activities to connect children of all abilities to the amazing outdoors.

Department of Biodiversity, Conservation and Attractions

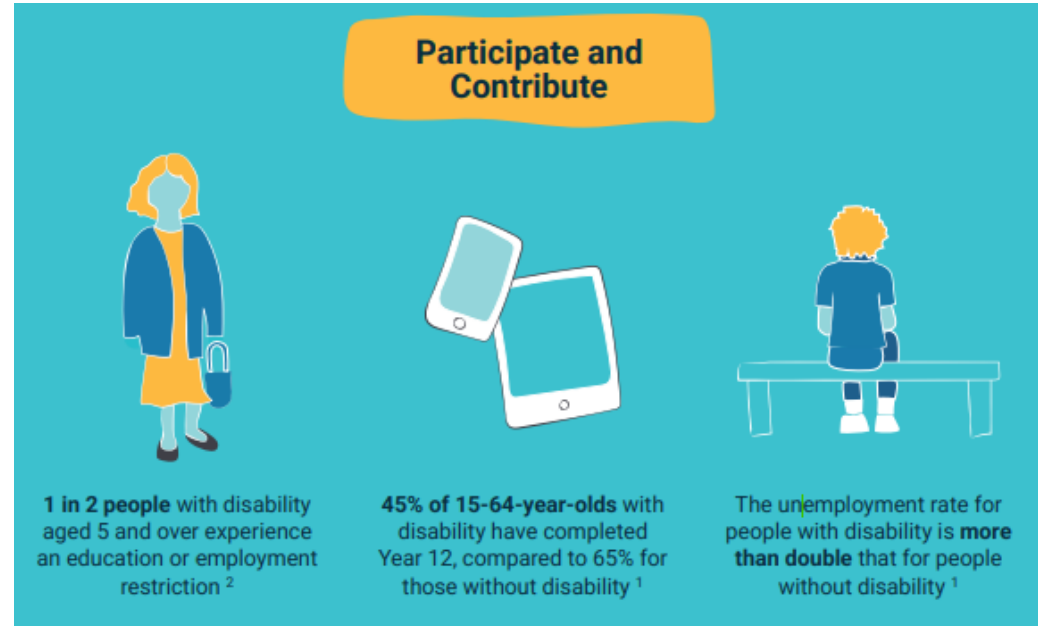
### 8.8 Break the Boundary

Develop in-park access experiences for visitors with disability in partnership with Break the Boundary, additional funding will go towards the creation of two regional activity hubs. This will provide training and access to equipment to help people get out on trails.



# Commonwealth funding: Disability Employment – Tourism Local Navigators Pilot

- \$3 million Commonwealth funding allocated to 12 organisations across Australia
- Hospitality Disability Network WA



# Examples of State Government initiatives



## Changing Places Transforming Lives

- Changing Places
- All-terrain Wheelchairs
- Accessible Trails initiative
- Employment



John King takes Terry Young for a dip. Photo: Paul McGovern

By BONNIE CHRISTIAN  
and JANE WISHAW

Wheelchair user Terry Young had not been in salt water for five years, but this week he twice went for a swim at Floreat Beach.

"Salt water does amazing things to the body, to be able to get in just enlightened me," he said.

He was able to do that because an all-terrain wheelchair has arrived at Floreat Surf Life Saving Club to give people who have trouble getting over the sand access to the water.

"I love being thrown around in the water, soaking my head in the water, just lying there for half an hour. It really is an amazing experience," Mr Young said.

"I think a lot of people in chairs restrict themselves because they don't have the access, so once they realise

there's going to be access there's going to be more people in chairs about."

The State Government granted the club \$500 for the wheelchair as part of a \$100,000 fund to build ramps and provide the wheelchairs throughout WA.

People will have to book online to use it. Meanwhile, at Cottesloe Beach, John Bell, who helped raise \$24,000 in 1996 to put a concrete path down to the water by the groyne, said he would like to see the path regularly swept.

Gating people have been seen clearing the path of sand from the beginning of the year (Clean sweep for sea access, POST January 8)

"I'd like to see the path regularly swept and the special railing that was along the path reinstalled," Mr Bell said.

"The railing was removed a few years ago."

Cottesloe council disability access committee member Katrina Porter said a clean path and railing would make the sea more accessible to the whole community, including pregnant women and parents with young children as well as people with a disability.

Cottesloe councillor Chilla Bulbeck said, "If we could get the paths cleaned every day for the rest of summer that would be a start, and then look at possibly doing something more serious going forward."

"The demographic of Cottesloe is not so young."

Cottesloe mayor Lorraine Young said the council was working to address access issues in Cottesloe.

"The Foreshore Masterplan, which we are currently engaging with State and Federal agencies to progress, includes much improved universal access," she said.



# Common issues for tourists with disability

- Not knowing what to expect
- Partial accessibility
- Not being able to include all family members or friends
- Feeling discriminated against
- Staff awareness
- Not being aware of businesses that are accessible

# Suggested steps forward:

- Increase awareness around disability accessibility.
- Conduct an accessibility audit to identify areas of improvement.
- Consult or seek feedback from people with disability in the design of your service.
- Start somewhere
- Promote your business to this market – WHO Statistics (1.3 billion people worldwide – significant disability)
- Engage with local government and other stakeholders

# Contact us.

[statedisabilitystrategy@communities.wa.gov.au](mailto:statedisabilitystrategy@communities.wa.gov.au)

